

# LOGIS<sub>16/18/20</sub>



**COMPACTNESS**  
**VERSATILITY**  
**MANOEUVRABILITY**  
**HIGH PERFORMANCE**

Strong frame and smooth, rounded design.

Carefully chosen choice of quality components.

Use of **AC technology**, such as:  
electronic controller with **IP54** protection grade  
and traction motor without brushes,  
(servicing almost non-existent);

greater torque with low traction speed and truck  
performance practically unchanged both with  
and without load;

once the speed is set on its variator it remains  
constant in all situations, also travelling up  
and down ramps, optimizing drive control  
of the machine.

All above elements are winning features that  
make the LOGIS truck series a valid and effective  
solution for pallet handling.



**samag**

CHARACTERISTICS	Maker	Firm	SAMAG	SAMAG	SAMAG
	Model	Name	LOGIS 16	LOGIS 18	LOGIS 20
Capacity	Q = Load maximum	t	1,6	1,8	2,0
Load centre	C = Load centre distance	mm	600	600	600
Traction	Battery, Diesel, Gas, Electric		BATTERY	BATTERY	BATTERY
Steering	Draw bar, Operator standing/seated		DRAW BAR	DRAW BAR	DRAW BAR
Tyres	V = Solid, L = Pneumatic front drive/rear load		V / V	V / V	V / V
Wheels (X = driving)	Quantity front/rear		1X + 2 / 2	1X + 2 / 2	1X + 2 / 2
Lift height	h3 = Lift	mm	120	120	120
Fork carrier plate	DIN / FEM / ISO / Covering		NO	NO	NO
Forks	s - e - l	mm	45 x 174 x 1190	60 x 170 x 1150	60 x 170 x 1150
Overall dimensions	L2 = Length including fork support	mm	450	576	576
	B = Total width	mm	700	700	700
Turning radius	Wa	mm	1447 ①	1533 ①	1533 ①
Load position	X from middle front axes	mm	935 ①	900 ①	900 ①
Aisle width	Ast with pallet 800 x 1200 longitudinal	mm	1912	2033	2033
Speed	Movement with/without load	Km/h	6 / 6	6 / 6	6 / 6
	Lift with/without load	m/s	0,02 / 0,07	0,04 / 0,05	0,04 / 0,05
	Lowering with/without load	m/s	0,11 / 0,05	0,06 / 0,06	0,06 / 0,06
Gradeability	With/without load	%	-	-	-
Max gradeability	With/without load	%	9 / 20	8 / 20	8 / 20
Weight	Including battery	Kg	465	570	570
Axle load	With load front/rear	Kg	814 / 1251	847 / 1523	892 / 1678
	Without load front/rear	Kg	382 / 83	440 / 130	440 / 130
Wheels	Quantity front/rear		3 / 2	3 / 2	3 / 2
	Front dimensions	mm	Ø230x75 / Ø100x40	Ø230x75 / Ø100x40	Ø230x75 / Ø100x40
	Rear dimensions	mm	Ø 85x90	Ø 85x90	Ø 85x90
Wheel base	Y	mm	1240 ①	1326 ①	1326 ①
Wheel track	At tyre centres front/rear	mm	505 / 372	505 / 390	505 / 390
Space	With load m1 at lowest point	mm	40	40	40
	With load m2 at centre of wheel base	mm	155	155	155
Service brake	Mechanical/hydraulic/electric/pneumatic		ELECTRIC	ELECTRIC	ELECTRIC
Parking brake	With foot/hand/dead man		DEAD MAN	DEAD MAN	DEAD MAN
Battery	DIN	YES	YES	YES	
	Tension/capacity with 5 hrs. of discharge	V/Ah	24 / 120 - 160	24 / 160 - 230	24 / 160 - 230
	Weight	Kg	136 / 159	151 - 194	151 - 194
Electric motor	Traction motor power (S2 60 min.)	Kw	1 AC	1 AC	1 AC
	Lift motor power (S3 15%)	Kw	2,2	2,2	2,2
Transmission	Type		ELECTRONIC A.C.	ELECTRONIC A.C.	ELECTRONIC A.C.
Drive unit	Type		HELIC. GEARINGS	HELIC. GEARINGS	HELIC. GEARINGS
Work pressure	For equipment (accessories)	bar	130	140	150
Noise level	Average noise level of human hearing	dB(A) < 70	< 70	< 70	< 70

① With forks in rest position = + 75 mm

## LOGIS 16-18-20

- Push button for slow functions
- Battery charge check indicator
- Single rollers with small pallet entry roller
- Inbuilt battery charger (optional)



## LOGIS 16

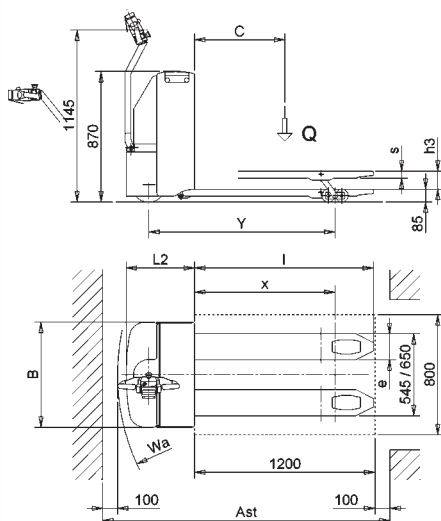
Truck with very reduced overall dimensions (L2 = 450 mm) with the use of driving type DIN batteries up to 160 Ah. Ideal for handling pallets in limited spaces and on lorries.



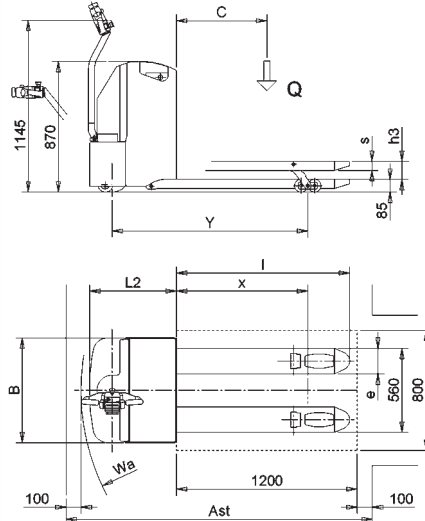
## LOGIS 18-20

Where a bigger capacity and work output is required with the use of driving type DIN batteries up to 230 Ah.

### LOGIS 16



### LOGIS 18/20



## Special version

with lateral handle fasteners, including load backrest and, if required, detachable fork extensions.