

# MONTINI

The  
*Revolution*  
is coming...



**MR6 - MR7 - MR8 - MR9 - MR10**  
with load capacities from 6.000 to 10.000 kg

# THE REVOLUTION IS GOING TO SWEEP YOU OFF YOUR FEET

The innovative **MONTINI** forklift trucks of the **Revolution series** are the brilliant result of more than three years of thorough product development and research.

Characterised by an innovative and winning design, they can handle loads from 6 to 10 tons with a load centre from 600 to 900 mm.

✓ **INNOVATIVE DESIGN AND TECHNOLOGY**

✓ **LONG WORKING AUTONOMY**

✓ **PANORAMIC ALL-GLASS CAB**

✓ **HIGH PERFORMANCE**



## THE CAB

Everything is fully safe and under the operator's complete control through the panoramic "**All-Glass**" cab, which is impact resistant and protects against accidentally falling loads.

The driver's seat turns hydraulically together with all main control devices, providing the operator with maximum comfort and reducing the risk of occupational diseases.

## SUPER STEERING SYSTEM

The MONTINI forklifts of the Revolution series all feature **twin-motor drive** with electronic technology in **Alternating Current (AC)**, combined with an electronic differential and a rear axle steering up to 101° (**Super Steering System**), permitting the forklift to turn in narrow aisles.

## RECORD LOAD CAPACITIES

The masts, completely designed and manufactured by MONTINI, provide **record load capacities in any working condition**.

## MAXIMUM AUTONOMY

**Batteries up to 96V/1550Ah** guarantee maximum autonomy for long work shifts.

When multiple shifts are required to optimise times, a mechanical or hydraulic system is available for the pulling out of the batteries, included in the truck body.

## PERFORMANCE

**Performance is incredible**, comparable to trucks of equivalent load capacity with internal combustion engines.

The MR forklift trucks reduce energy costs by more than 30% and maintenance costs by approximately 20% compared to diesel lift trucks of the same capacity.

## MONTINI SERVICE

MONTINI provides its sales and service network with an **innovative diagnosis system** to keep everything under control and reduce any machine downtimes. It is even possible to connect to the MONTINI headquarters via web.

# THE COMFORT OF AN UNBELIEVABLE DRIVE EXPERIENCE

The driver's seat together with all main control devices can turn hydraulically, providing the operator with maximum comfort and optimal visibility in any operating condition.

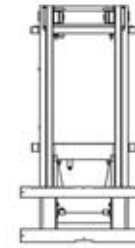
Furthermore, this system reduces the risk of occupational diseases.

With MR lift trucks, it is easier to work without health problems.

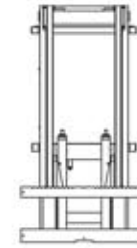


## THE LIFTING GROUPS

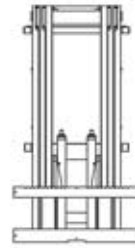
Wide range of masts to meet the most varied requirements and to ensure excellent visibility in any working condition.



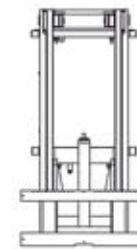
DX T.V.



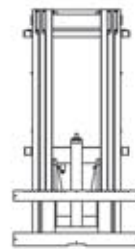
DX T.F.L.  
2 cylinders



TX T.F.L.  
2 cylinders



DX T.F.L.  
1 cylinder



TX T.F.L.  
1 cylinder

## DRIVER'S SEAT ROTATION



0°

The operator is facing forward towards the load.



45°

The operator can rotate to find the best visibility.



90°

The operator can turn the driver's seat up to 90 degrees to properly monitor the load and the work area.



## A LOOK AT THE CAB

The comfortable and spacious driver's cab is placed on special **vibration damping supports (silent block)** that reduce vibration and noise and is designed to facilitate the operator's daily work.

Getting in and out of the forklift truck is easy with **convenient steps** and **comfortable handles** positioned at a low height and along the overhead guard.

The cab is customisable thanks to a **wide range of accessories and equipment**.



## COMFORTABLE DRIVING POSITION

The colour display provides a variety of information in a single on-board computer. The steering wheel, which is height- and incline-adjustable, is suspended. The absence of components in the leg area gives the driver **an incomparable freedom of movement**.

MR forklift trucks are standard equipped with **joystick**, which allows you to operate **all the vehicle's hydraulic functions** with a single control lever.

Even the pedals, which are clearly inspired by the automotive industry, guarantee performance in maximum comfort.

## WIDE VISIBILITY

Perfect 360-degree view thanks to the panoramic all-glass cab with its elegantly curved windows.

The large upper window, shockproof and resistant to falling loads, maximises the operator's field of vision and allows precise positioning of the load in full safety.





## REMOVABLE BATTERIES

MR forklift trucks are standard equipped with **lateral battery quick replacement** for those customers who need to work multiple shifts.

The battery is supplied in two single blocks positioned on the sides of the lift truck's solid chassis to facilitate pulling out and handling.

**Battery replacement** is easy and simple, customisable to meet the requirements of each warehouse and feasible in different modes:

- **mechanical** (standard), through the use of a second forklift truck or a pallet truck;
- **hydraulic** (optional), for automatic battery pulling out, operated directly from the driver's seat.

## POWERFUL AND ECONOMICAL



### CARE FOR THE ENVIRONMENT

MONTINI has always developed **electric vehicles** that represent the **best compromise between performance and environmental sustainability**.

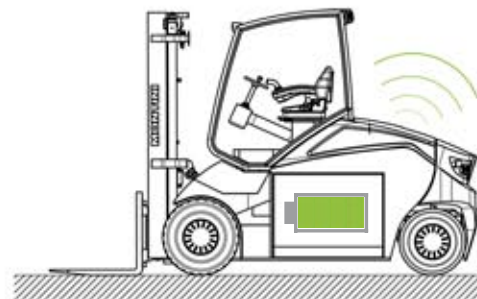
MR electric forklift trucks are a combination of power and technology with **zero emissions**, ideal for working outdoors or indoors even in the presence of dust and moisture.



### AUTONOMY AND PERFORMANCE

Thanks to batteries up to 96V/1550Ah, you can reach **speeds of almost 20 km/h** and high performance for an **endless work shift**, without the need to replace the batteries.

**Increased torque and number of revolutions controlled with precision to cover challenging slopes.**



*Thanks to the innovative "Remote Control" system, all the forklift truck's major parameters are kept under control.*



*Control of the hydraulic pulling out of the batteries.*

## 360° ROTATION

The two state-of-the-art traction motors, with alternating current (AC) independent control, set themselves apart for their high torque, superior performance, reduced operating costs and protection (IP54) against dust and moisture.



### **MONTINI SUPER STEERING SYSTEM**

The Super Steering System, designed and built by MONTINI, is provided standard across the whole MR range.

The forklift trucks fitted with the Super Steering System, together with the twin-motor drive which acts as an electronic differential, guarantee the tightest room for manoeuvring compared to trucks with traditional differential.

## TWIN-MOTOR IN ALTERNATING CURRENT (AC): MORE PERFORMANCE AND INCREASED AUTONOMY

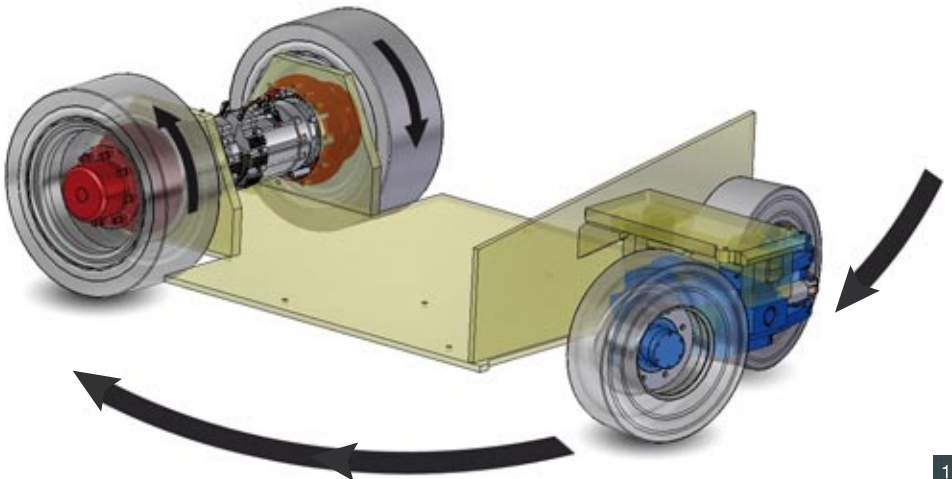
- ✓ No maintenance.
- ✓ Top performance for acceleration, travel and lifting.
- ✓ Longer battery autonomy, thanks to the excellent performance of the motors and the effective recovery of the braking energy.
- ✓ No polluting air emissions, in respect for the environment.

## MONTINI SUPER STEERING SYSTEM: TO STEER IN UNIMAGINABLE SPACES

- ✓ Rear steering axle up to  $101^\circ$ , standard.
- ✓ Speed control when turning, standard.
- ✓ Maximum manoeuvrability.
- ✓ Easy and convenient maintenance.

## OIL-BATH DISC BRAKES: RELIABLE, SAFE AND QUIET

- ✓ Gearboxes with oil-bath disc brakes, standard.
- ✓ Lower maintenance costs due to less wear and tear on the components and proven reliability.
- ✓ Maximum performance and safety, provided by the auxiliary cooling system, standard.
- ✓ Parking brake with automatic engagement.



## 360° ROTATION

The two state-of-the-art traction motors, with alternating current (AC) independent control, set themselves apart for their high torque, superior performance, reduced operating costs and protection (IP54) against dust and moisture.



LENGTH (L2):  
**3.683 - 3.721 mm**

WIDTH (B1):  
**1.650 - 2.272 mm**

TYRES:  
**SE - CU - PN**

TURNING RADIUS (WA):  
**2.981 mm**



# LIFT TRUCK ATTACHMENTS

The MR forklift trucks are well suited to **multiple customisable logistic solutions**.

The MONTINI Revolution range has been designed to provide unique solutions to the market: from high lifts to heavy loads, from significant load centres to special attachments, the MR series represents **the perfect solution to ever more ambitious daily challenges**.



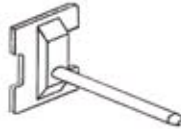
## EQUIPMENT FOR EVERY NEED

Flexible use in every industry:

- timber
- paper
- beverage
- construction material
- heavy carpentry
- aerospace
- nuclear
- yours...



Jumbo paper roll clamps



Steel coil booms



Paper roll clamps



Multipallet fork positioners



Bale clamps

# TECHNICAL DATA

Manufacturer	MONTINI		MONTINI		MONTINI	MONTINI	MONTINI			
Model	MR6		MR7		MR8	MR9	MR10			
Power unit: electric, diesel, petrol, L.P. gas, electric mains	Electric		Electric		Electric	Electric	Electric			
Drive type: hand, pedestrian, stand-on, sit-on, order picker	Sit-on		Sit-on		Sit-on	Sit-on	Sit-on			
Capacity/Load	Q (t)		6		7	8	9	10		
Load centre	c (mm)		600		600	600	600	600		
Load distance (without sideshift)	x (mm)		707		707	707	735	735		
Wheelbase	y (mm)		2500		2500	2500	2500	2500		
Tyres: superelastic (SE), cushion (C), pneumatic (PN), twin (G)	SE		SEG		SE	SEG	SEG	SEG		
Tyre size, front	mm		355/65-15		8,25-15	355/50-20	8,25-15	315/70-15	315/70-15	
Tyre size, rear	mm		250/70-15		250/70-15	250/70-15	250/70-15	250/70-15		
Wheels: number, front/rear (x=drive wheel)	2x/2		4x/2		2x/2	4x/2	4x/2	4x/2		
Track width, front	b10 (mm)		1330		1550	1390	1550	1550	1658	1658
Track width, rear	b11 (mm)		1403		1403	1403	1403	1403	1403	
Maximum tilt of mast/fork carriage, forward/backward	Degrees		5°/10°		5°/10°	5°/10°	5°/10°	5°/10°		
Overhead guard height	h6 (mm)		2950		2950	2950	2950	2950		
Length to face of forks	ℓ2 (mm)		3683		3683	3683	3721	3721		
Overall width	b1/b2 (mm)		1650/1650		2050/1650	1710/1650	2050/1650	2050/1650	2272/1650	2272/1650
Fork dimensions	s/e/l (mm)		60/200/1200		60/200/1200	70/200/1200	70/200/1200	70/200/1200		
Fork carriage ISO 2330, class/type A, B	4A		4A		4A	5A	5A	5A		
Minimum fork carriage width	b3 (mm)		1450		1450	1450	1800	1800		
Turning radius	Wa (mm)		2981		2981	2981	2981	2981		
Travelling speed, laden/unladen	km/h		17/18		16/18	15/18	14/18	13/18		
Lifting speed, laden/unladen	m/s		0,34/0,42		0,32/0,42	0,35/0,42	0,35/0,42	0,35/0,42		
Lowering speed, laden/unladen	m/s		0,53/0,45		0,53/0,45	0,53/0,45	0,53/0,45	0,53/0,45		
Gradeability, laden/unladen (S2 30°)	%		18/33		16/31	14/28	12/26	10/24		
Maximum gradeability, laden/unladen (S2 5°)	%		23/42		21/40	19/36	17/34	15/32		
Service brake	hydraulic/ electric		hydraulic/ electric		hydraulic/ electric	hydraulic/ electric	hydraulic/ electric	hydraulic/ electric		
Rated voltage/capacity 5h	V/Ah		96/805-1150		96/1035-1550	96/1035-1550	96/1250-1550	96/1250-1550		
Type of electronic control	inverter		inverter		inverter	inverter	inverter	inverter		
Operating pressure for attachments	bar		250		250	250	250	250		

# EQUIPMENT VARIANTS

	MR6	MR7	MR8	MR9	MR10
<b>DRIVER'S SEAT</b>					
Low operating costs due to low energy consumption in all duty cycles and long maintenance intervals	●	●	●	●	●
Steel overhead guard	●	●	●	●	●
Cab with weatherproof protection (closed with rigid or PVC doors)	○	○	○	○	○
Front, rear and upper glasses (all with windscreen wipers and washers)	○	○	○	○	○
Pedalboard with single pedal and forward/backward button on the joystick	●	●	●	●	●
Pedalboard with forward-backward double pedal	○	○	○	○	○
Glove compartment	●	●	●	●	●
Height- and incline-adjustable steering wheel in one movement	●	●	●	●	●
Rotation of the driver's seat up to 90° for driving in reverse in the event of limited front visibility, for reducing occupational diseases	○	○	○	○	○
Multifunction colour display and function keys, with IP67 protection	●	●	●	●	●
Grammer seat "Primo L" with leatherette cover	●	●	●	●	●
Grammer seat "Primo L" with pneumatic suspension	●	●	●	●	●
Fabric cover, left armrest, lumbar support, height adjustable backrest	○	○	○	○	○
Heated seat	○	○	○	○	○
Handles for easy access to the driver's seat	●	●	●	●	●
Vibrations reduced by separating the cab from the frame	●	●	●	●	●
Document pocket on the seat back	○	○	○	○	○
Radio/MP3 player with USB port	○	○	○	○	○
Sun visor and sunblind	○	○	○	○	○
Electric heating (including defroster vent)	○	○	○	○	○
Air conditioning	○	○	○	○	○
Version suitable for cold storage room (with display and oil for hydraulic controls that can be used down to -30°C)	○	○	○	○	○
<b>MAST</b>					
Mast DX T.V.	●	●	●	●	●
Mast DX T.F.L.	○	○	○	○	○
Mast TX T.F.L.	○	○	○	○	○
Customisable load protection grid	○	○	○	○	○
Mast with automatic vertical position	○	○	○	○	○
Hydraulic accumulator to dampen load vibrations	○	○	○	○	○
Mast bearings already greased and maintenance free	●	●	●	●	●
Angle of forward/backward tilt - 5/10 degrees	●	●	●	●	●
<b>TYRES</b>					
Single superelastic tyres	●	●	—	—	—
Twin superelastic tyres	○	○	●	●	●
<b>HYDRAULICS</b>					
Quiet operation hydraulic pump	○	○	○	○	○
Hydraulic control valve with proportional valves for particularly sensitive movements	●	●	●	●	●
Possibility to set the parameters of the hydraulic functions individually	●	●	●	●	●
Joystick with 2 active functions	●	●	●	●	●
Joystick with 3 and 4 active functions	○	○	○	○	○
Intake filtering for a maximum reduction of contamination in the oil	●	●	●	●	●
<b>FUNCTIONS</b>					
Energy-saving program	●	●	●	●	●
Continuous acceleration and reverse operation without vibration	●	●	●	●	●
Operating hour meter only with traction and pump motors in operation	●	●	●	●	●
Super Steering System up to 101 degrees	●	●	●	●	●
<b>BRAKE</b>					
Wear-resistant oil-bath disc brake	●	●	●	●	●
Closed circuit, oil-cooled gearbox with oil-air exchanger	●	●	●	●	●
Braking energy recovery: at slowdown, release, reverse	●	●	●	●	●
Electro-hydraulic parking brake	●	●	●	●	●
<b>SAFETY</b>					
Low load centre of the vehicle to ensure the best stability	●	●	●	●	●
"All-glass" overhead guard	○	○	○	○	○
Protection grid on the overhead guard	○	○	○	○	○
Easy access to the maintenance points	●	●	●	●	●
LED working lights and lighting	○	○	○	○	○
LED brake and reverse lights	●	●	●	●	●
Adjustable speed limit	○	○	○	○	○
Signalling device (with blue bright spot)	○	○	○	○	○
Automatic engagement of the parking brake and opening of the general remote control switch when the driver leaves the seat	●	●	●	●	●
Verification that the seat belt is fastened	●	●	●	●	●
Password for access	○	○	○	○	○
Verification of the data of battery - battery charger and recording of shocks to the forklift truck (via GPRS)	○	○	○	○	○
Rapid recognition of electrical faults via remote data transmission (Remote Control)	○	○	○	○	○
Automatic speed reduction when turning	●	●	●	●	●
Operator retention system (sidebars)	○	○	○	○	○
IP54 traction motors	●	●	●	●	●
<b>BATTERY</b>					
Battery removable laterally and mechanically	○	○	○	○	○
Battery removable laterally and hydraulically	○	○	○	○	○

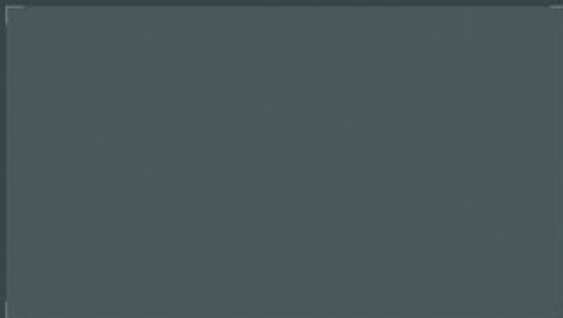
# MONTINI

**MONTINI di Garotti Francesco & C. s.n.c.**

Via G. Bentini, 7/9  
IT - 48010 Cotignola RA

Tel. +39 0545 991051  
Fax +39 0545 42127

[info@montini.biz](mailto:info@montini.biz)  
[www.montini.biz](http://www.montini.biz)



The  
**Revolution**  
is started!